

# 6. Viewing Current Conditions

---

## Overview

The **C**urrent option on the What if? main menu provides options for viewing maps and reports that describe the current conditions in the study area. The first section of this chapter describes the What if? mapping option. The second section describes the What if? reports. The third section describes the procedures for viewing the current maps for the study area. The final section describes the procedures for viewing reports describing the current conditions in the study area.

---

## 6.1 What if? Mapping Option

### *What if? Mapping Option*

The Current, Suitability, and Allocation components of What if? use a standard form to display their maps. The maps are generated with ESRI's MapObjects<sup>®</sup> software from the UAZ shape file that was created during the What if? Setup process. The What if? map includes a main map form and a table of contents. The procedures for using them to prepare a map are described briefly below.

### *Table of Contents*

#### 6.1.1 Table of Contents

The Table of Contents is used to: (1) view the map legend; (2) select layers to be displayed on the map; and (3) change the colors displayed on the map. The procedures for doing these three tasks are described below.

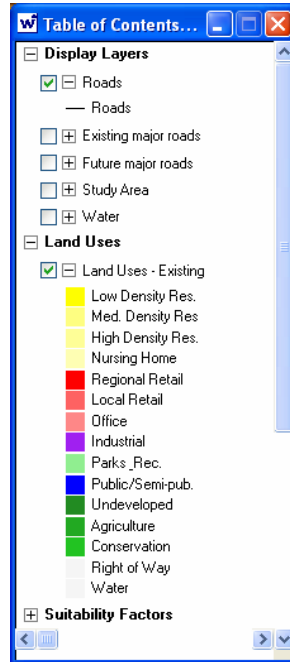
### *Viewing Map Legend*

#### 6.1.1.1 Viewing Map Legend

As shown below, the map legend is organized with a hierarchical series of data frames with plus check boxes. The data frames, identified by bold text, identify the major map categories, e.g., Display Layers, Land Uses, and so on, as shown below.

Clicking on one of the data frame check boxes changes the plus check box to a minus check box and displays the map layers within each data frame. For example, in the figure below, the Display Layers label has been expanded to display the various display layers—Roads, Existing

Major Roads, and so on. The data frames can be collapsed by clicking on the minus check box to the left of the data frame label.



### **Displaying Map Layers**

#### **6.1.1.2 Displaying Map Layers**

As shown above, you can display a map layer by clicking on the check box to the left of the layer label. The layer legend displays the color and/or symbol for all entities in a map layer. The layer legend can be collapsed by clicking on the minus check box to the left of the layer label.

You can display more than one layer on the map by clicking on more than one check box. If more than one layer is selected, they will be displayed in the order in which they are listed in the Table of Contents. Thus, for instance, you can click on the **Roads** layer and the **Land Uses – Existing** layer to create a map that displays the current roads on top of the existing land use map.

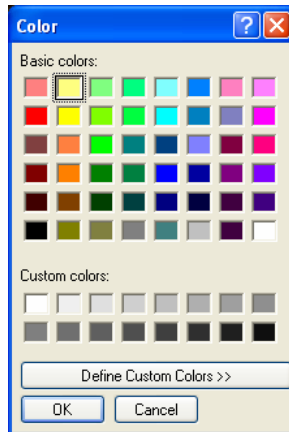
### **Changing Map Colors**

#### **6.1.1.3 Changing Map Colors**

You can change the map color for any map layer by clicking on the box associated with the color you would like to change to display the Map Objects color picker shown below.

### **Changing to Basic Colors**

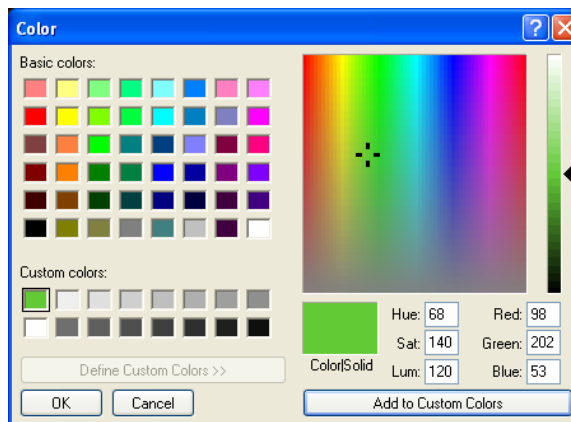
You can change the color to one of the basic colors displayed on this form by selecting the desired color from the **Basic colors:** matrix and clicking on the **OK** button. You will be returned to the Table of Contents and the map color will be changed.



### Defining Custom Colors

You can also define your own custom colors by clicking on the **Define Custom Colors >>** button at the bottom of the color picker to display the expanded Map Objects color picker form, shown below. To define a custom color you should:

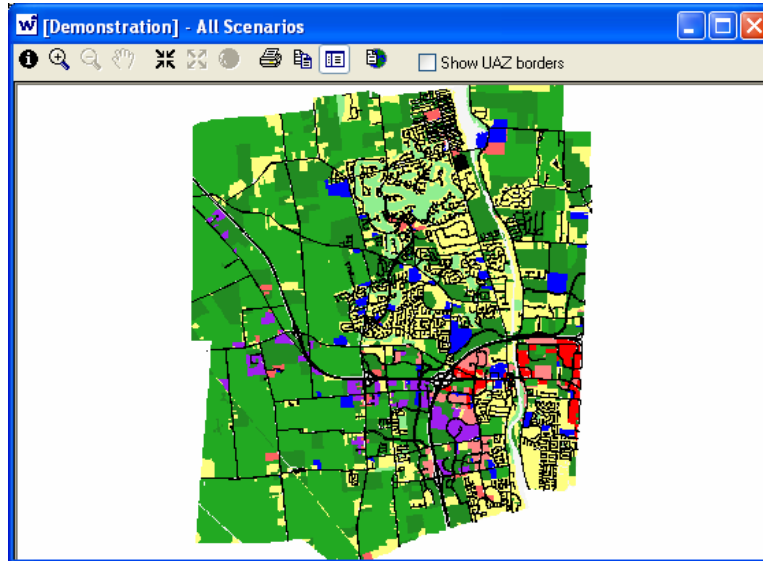
1. Click on one of the boxes labeled **Custom colors:** in the lower left corner of the form;
2. Click on the color band at the top right portion of the Color form to select a custom color. The color you select will be displayed in the **Color/Solid** box;
3. Move the slider bar on the right hand side of the form to select the precise color shade you'd like to use. The color you select will be displayed in the **Color/Solid** box;
4. Click in the **Add to Custom Colors** button to change the color in the **Custom colors:** box you selected;
5. You can repeat this procedure to define other custom colors if you like. When you are done, you can use the procedures for changing to the basic colors described above to change the map colors to one of the custom colors you've defined.



## Main Mapping Form

### 6.1.2 Main Mapping Form

As shown below, eleven tool buttons are provided at the top of the main What if? map form. The procedures for using these tools are described briefly below.



- **Identify.** This tool can be used to click on a uniform analysis zone (UAZ) and view a listing of its attributes.



- **Zoom In.** This tool can be used to draw a rectangular box on the map and zoom into the selected area.



- **Zoom Out.** After zooming into the map, you can use this tool to draw a rectangular box on the map and zoom out from the selected area.



- **Pan.** After zooming into the map, you can use this tool to pan around the map, i.e., drag the map image to a new location.



- **Fixed Zoom In.** You can click on this button to zoom into the map.



- **Fixed Zoom Out.** You can click on this button to zoom out from the map.



- **Zoom All.** You can click on this button to view the entire map display.



- **Print to the Default Printer.** You can click on this button to print the map.



- **Copy Map to Clipboard.** You can click on this button to copy the current map to the standard Windows clipboard. You can then copy the map from the clipboard into another application, e.g., a Word document.



- **Hide/Display TOC.** You can click on this button to hide (or display) the Table of Contents.



- **Open New Map.** You can click on this button to open a new map. You can return to the current map by closing the new map.

You can click on the **Show UAZ Borders** check box to display the borders for the UAZs in the map.

You can click on the **X** button at the upper right of the main map form or the table of contents to close the map and return to the main What if? form.

## 6.2 What if? Reports Option

### *What if? Reports Option*

What if? uses the Crystal Reports report creation software to prepare reports describing the What if? scenarios and projects. The general procedures for using the report forms are described briefly below.

### *Viewing Reports*

#### 6.2.1 Viewing Reports

The report form contains a series of buttons that can be used to view, print, and export a report. The following options are available for viewing a the report on screen:



- **Go to First Page.** You can click on this button to go to the first page of the report.



- **Go to Previous Page.** You can click on this button to go to the previous page of the report.

2 of 3

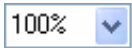
- **Current Page Number.** This records the current page number, relative to the total number pages in the report.



- **Go to Next Page.** You can click on this button to go to the next page of the report.



- **Go to Last Page.** You can click on this button to go to the last page of the report.



- **Magnification Factor.** This drop-down list allows you to select a factor for magnifying the report image, from 25% to 400%.



- **Search.** This option allows you to search the document for all occurrences of a text string.

#### 6.2.2 Printing Reports

### *Printing Reports*

The report form provides the following options for printing reports:



- **Print.** This option allows you to specify the pages to be printed, the number of copies, and whether the report should be collated.



- **Print Setup.** This option displays the Windows Print Setup form that allow you to select the printer, the paper orientation, and other print options.

### 6.2.3 Exporting Reports

#### Exporting Reports

The report form allows you to export the report to a wide variety of formats for transfer to other programs. The export options include:



- Excel;
- Hypertext Markup Language (HTML);
- Lotus 1-2-3;
- ODBC; and
- Character-, comma-, and tab-separated text.

The report export option also provides three options for storing the exported report:

- Disk file;
- Lotus Notes database; and
- Microsoft Mail (MAPI).

#### Viewing Current Maps

##### Viewing Current Maps

You can view maps showing current conditions in the study area by selecting the **Current | Maps** option from the main What if? form. You will then be presented with the standard What if? map described in Section 6.1 What if? Mapping Option, above.

As shown, below the Current map legend lists the following data frames:

##### Viewing Display Layers

- **Display Layers.** This data frame contains any display layers that were defined in the **Setup | Define Display Layers** option, described in Section 4.16.1 Defining Display Layer Information;

##### Viewing Existing Land Uses

- **Land Uses.** This data frame contains a single layer showing the current land uses in the study area, as defined in the **Setup | Define Land Uses | Existing** option, described in Section 4.6.3 Defining Existing Land Uses;

##### Viewing Suitability Factors

- **Suitability Factors.** This data frame contains the suitability layers that were defined in the **Setup | Define Land Uses | Suitability** option, described in Section 4.6.4 Defining Suitability Land Uses;

##### Viewing Infrastructure Controls

- **Infrastructure Controls.** This data frame contains any infrastructure controls that were defined in the **Setup | Define Allocation Controls | Infrastructure Controls** option, described in Section 4.15.1 Defining Infrastructure Controls;

##### Viewing Land Use

- **Land Use Controls.** This data frame contains any land use

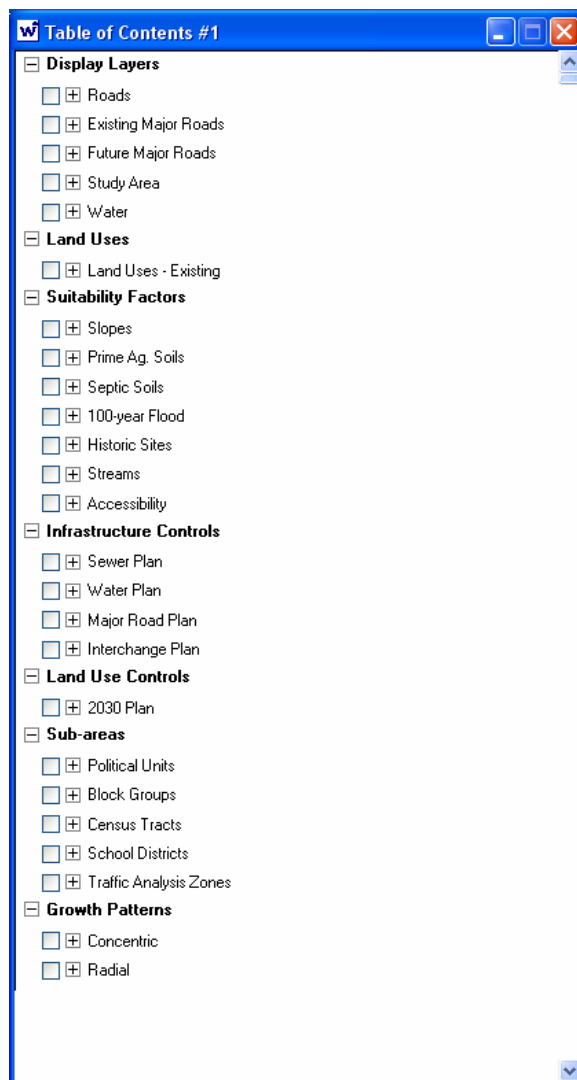
## Controls

### Viewing Sub-area Boundaries

### Viewing Growth Patterns

controls that were defined in the **Setup | Define Allocation Controls | Land Use Controls** option, described in Section 4.15.2 Defining Land Use Controls;

- **Sub-areas.** This data frame contains the boundaries for any sub-areas that were defined in the **Setup | Define Sub-Areas** option, described in Section 4.16.3 Defining Sub-Areas; and
- **Growth Patterns.** This data frame contains any growth patterns that were defined in the **Setup | Define Allocation Controls | Growth Patterns** option, described in Section 4.15.3 Defining Growth Patterns.



## 6.4 Viewing Current Reports

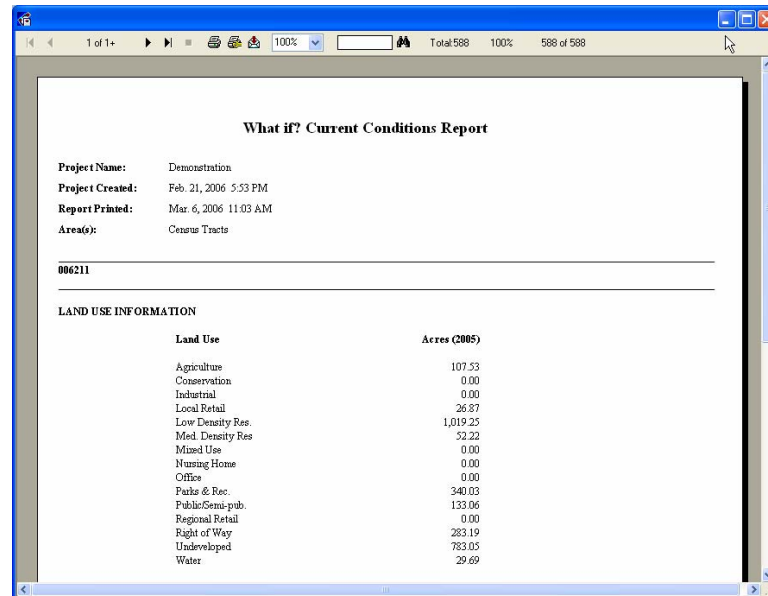
You can view reports describing current conditions in the study area, and sub-areas within it, by selecting the **Current | Reports** option from the main What if? form.

### **NOTE!**

**NOTE: The Current | Reports option is not available for the suitability analysis option**

When you select this option, you will be presented with a form that can be used to select the sub-areas for which you wish to see a report, e.g., for the Study Area, Block Groups, Census Tracts, School Districts, or Traffic Analysis Zones for the Demonstration project.

After selecting the sub-areas for which you wish to see the current report, you will be presented with the current conditions report, shown below.



Land Use	Acres (2005)
Agriculture	107.53
Conservation	0.00
Industrial	0.00
Local Retail	26.87
Low Density Res.	1,019.25
Med. Density Res.	52.22
Mixed Use	0.00
Nursing Home	0.00
Office	0.00
Parks & Rec.	340.03
Public/Semi-pub.	133.06
Regional Retail	0.00
Right of Way	283.19
Undeveloped	783.05
Water	29.69

As this example illustrates, the current report can be used to view the following information:.

### 6.4.1 Viewing Current Report Header

#### **Viewing Current Report Header**

The current report header provides the following information:

- The project name;
- The date the project was created;
- The date the report was printed; and
- The area(s) which the report covers.

***Viewing Sub-area Labels***

### **6.4.2 Viewing Sub-area Labels**

The label for each sub-area included in the report, e.g., census tract 006211 in the example above is listed between two horizontal lines.

***Viewing Land Use Information***

### **6.4.3 Viewing Land Use Information**

The Land Use Information portion of the current report lists the current quantity of each land in each sub-area.

***Viewing Current Population Information***

### **6.4.4 Viewing Current Population Information**

The Population Information section of the current report lists the following population and housing information for each sub-area:

- Total population;
- Group quarters population;
- Number of households;
- Number of housing units;
- Number of vacant housing units;
- Vacancy rate; and
- Average household size.

***NOTE!***

**NOTE: The current population information is not reported for the land use analysis option.**

***NOTE!***

### **6.4.5 Viewing Current Employment Information**

The Employment Information section of the current report lists the current employment by place of work for all employment sectors in each sub-area.

**NOTE: The current employment information is not reported for the land use and population analysis options.**